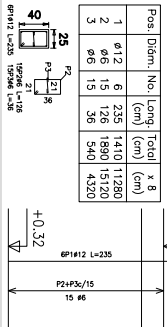


Pilares que terminan en  
NIVEL +2.42 VIGAS INTERMEDIAS  
Escala: 1:50

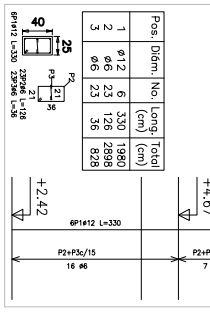
P1=P2=P3=P4=P5=P6  
P7=P8

---

4

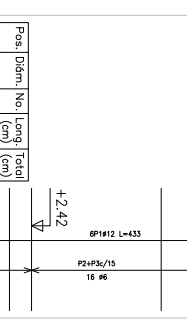


P4	+5,56
----	-------



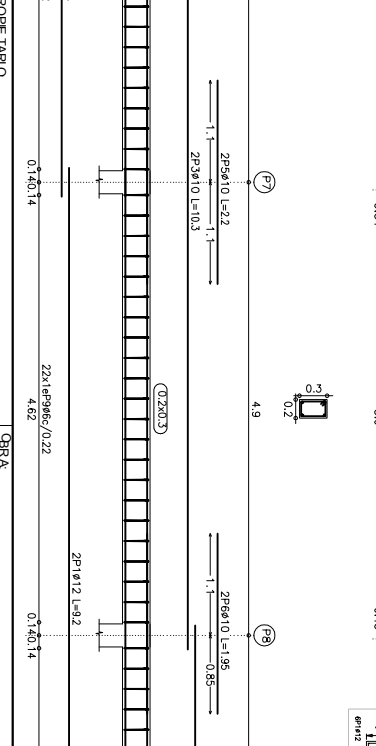
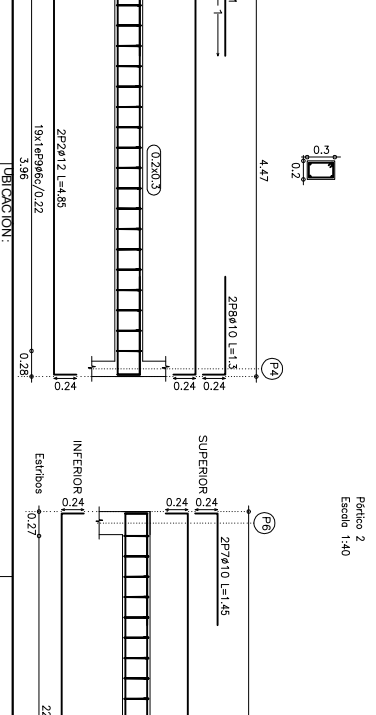
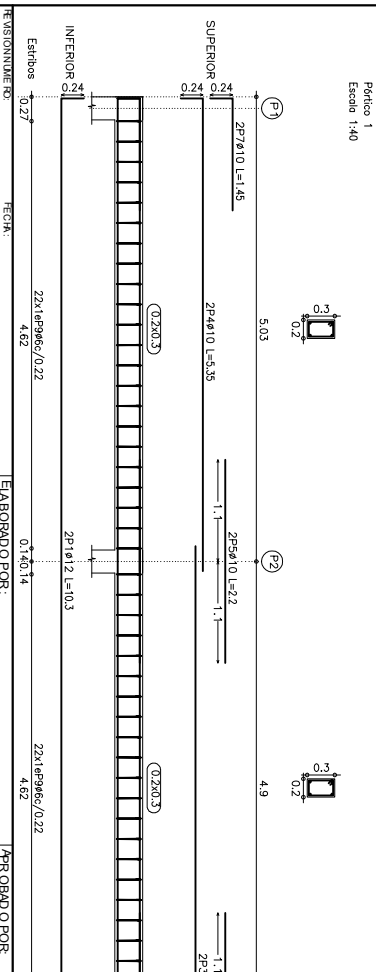
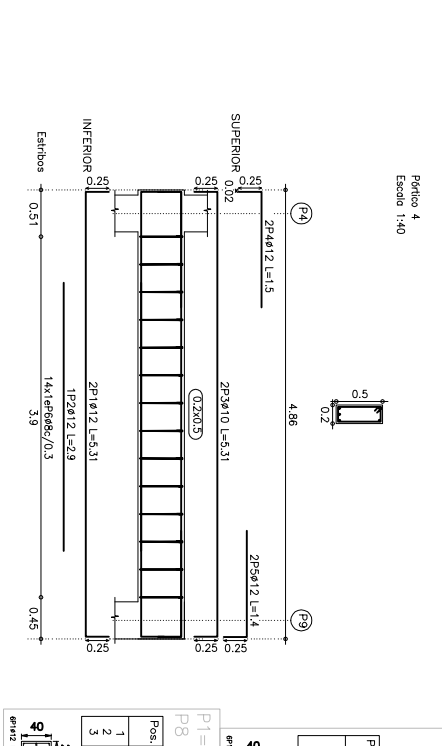
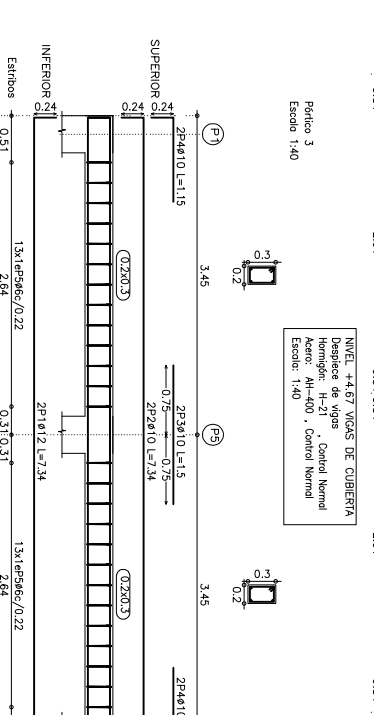
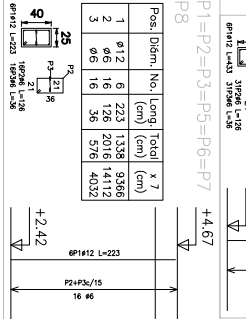
Pilares que terminan en  
NIVEL +4.67 VIGAS DE CUBIERTA  
Escala: 1:50

P9



1	012	6	433	2598
2	06	31	126	3906
3	06	31	36	1116

40  
25  
21  
36  
P2  
+0.32

[illegible][illegible]

	1	2	3	4	5	6	7	8	9	10	11	12	13	14	15	16	17	18	19	20	21	22	23	24	25	26	27	28	29	30	31	32	33	34	35	36	37	38	39	40	41	42	43	44	45	46	47	48	49	50	51	52	53	54	55	56	57	58	59	60	61	62	63	64	65	66	67	68	69	70	71	72	73	74	75	76	77	78	79	80	81	82	83	84	85	86	87	88	89	90	91	92	93	94	95	96	97	98	99	100
Periodo 1	1	2	3	4	5	6	7	8	9	10	11	12	13	14	15	16	17	18	19	20	21	22	23	24	25	26	27	28	29	30	31	32	33	34	35	36	37	38	39	40	41	42	43	44	45	46	47	48	49	50	51	52	53	54	55	56	57	58	59	60	61	62	63	64	65	66	67	68	69	70	71	72	73	74	75	76	77	78	79	80	81	82	83	84	85	86	87	88	89	90	91	92	93	94	95	96	97	98	99	100
Periodo 2	1	2	3	4	5	6	7	8	9	10	11	12	13	14	15	16	17	18	19	20	21	22	23	24	25	26	27	28	29	30	31	32	33	34	35	36	37	38	39	40	41	42	43	44	45	46	47	48	49	50	51	52	53	54	55	56	57	58	59	60	61	62	63	64	65	66	67	68	69	70	71	72	73	74	75	76	77	78	79	80	81	82	83	84	85	86	87	88	89	90	91	92	93	94	95	96	97	98	99	100
Periodo 3	1	2	3	4	5	6	7	8	9	10	11	12	13	14	15	16	17	18	19	20	21	22	23	24	25	26	27	28	29	30	31	32	33	34	35	36	37	38	39	40	41	42	43	44	45	46	47	48	49	50	51	52	53	54	55	56	57	58	59	60	61	62	63	64	65	66	67	68	69	70	71	72	73	74	75	76	77	78	79	80	81	82	83	84	85	86	87	88	89	90	91	92	93	94	95	96	97	98	99	100
Periodo 4	1	2	3	4	5	6	7	8	9	10	11	12	13	14	15	16	17	18	19	20	21	22	23	24	25	26	27	28	29	30	31	32	33	34	35	36	37	38	39	40	41	42	43	44	45	46	47	48	49	50	51	52	53	54	55	56	57	58	59	60	61	62	63	64	65	66	67	68	69	70	71	72	73	74	75	76	77	78	79	80	81	82	83	84	85	86	87	88	89	90	91	92	93	94	95	96	97	98	99	100

[illegible]

Ø	Idem	No.	Long.	Totale
Ø12			(cm)	(cm)
6		433	2598	
6		126	3906	

$$\frac{+242}{\Delta}$$


$$\frac{P2+P3/15}{15 \text{ } \phi 6}$$

$$6P1\#12 \text{ L}=433$$

$\Delta P = P_5 - P_6 = P_7 + 4.67$

Technical drawing of a mechanical part. The drawing includes a top view and a cross-section view. The top view shows a rectangular part with a central hole. Dimensions are given as 0.3 for the width of the central hole, 0.2 for the width of the surrounding material, and 3.93 for the overall width. The cross-section view shows a semi-circular profile with a radius of 2.42. The total height of the part is 16. The drawing is labeled with 'P2' and 'P3' at the top, and 'P2+P3' at the bottom. The overall height is labeled as 16. The drawing is labeled with 'P2' and 'P3' at the top, and 'P2+P3' at the bottom. The overall height is labeled as 16.

Figure 1: Schematic diagram of the experimental setup. The diagram shows a vertical column of 10 rectangular blocks. The top block is labeled '0.25' and '2Pa±10'. The column is labeled '0.25' and '0.22'. The bottom block is labeled '0.24' and '0.27'. The column is labeled '0.24' and '0.27'.

DEPARTAMENTO		LA PAZ	
PROVINCIA		LARECAJA	
MUNICIPIO		GUANAY	
 <p><b>YACIMIENTOS PETROLIFEROS FISCALES BOLIVIANOS</b></p> <p>GERENCIA DE REDES DE GAS Y DUCTOS DIRECCION DE GAS VIRTUAL</p>			
<p align="center"><b>PROYECTO CONSTRUCCION DE OBRAS CIVILES COMPLEMENTARIAS PARA LA ESTAD DE GUANAY</b></p>			
DESCRIPCION:			
PLANTA ELES Y VIGAS DE GALPÓN			
ESPECIALIDAD	FECHA:	ESCALA:	LAMINA:
ESTRUCTURAS	JULIO 2017	INDICADAS	4/5